

Tax Webhook Sample Application



one to one ⁱⁿ one™

A **xerox**  Company

© 2022 XMPie®, A CareAR Company. All rights reserved.

U.S. Patents 6948115, 7406194, 7548338, 7757169, 10180815, 10491947 B1, JP Patent 4406364B and pending patents.

Tax Webhook Sample Application Guide, Document Revision: 1.1, November 2022

For information, contact XMPie Inc.

XMPie provides this publication "as is" without warranty of any kind, either express or implied. This publication may contain technical inaccuracies or typographical errors. While every precaution has been taken in the preparation of this document, the publisher and author assume no responsibility for errors or omissions. Nor is any liability assumed for damages resulting from the use of the information contained herein. Changes are periodically made to the information herein; these changes will be incorporated in new editions of the publication. XMPie may make improvements and/or changes in the product(s) and/or the program(s) described in this publication at any time.

XMPie, the XMPie logo, PersonalEffect, uChart, uCreate, uDirect, uEdit, ulmage, uPlan, uProduce, uStore, StoreFlow, TransMedia, Circle, ADOR, XLIM, eMedia Cloud, RURL, XMPL, OpenXM and the slogan "one to one in one" are trademarks or registered trademarks of XMPie, A Xerox Company, and may not be used without permission. No part of these materials may be used or reproduced in any form, or by any means, without the express written consent of XMPie. To request permission to use these materials, please contact marketing@xmpie.com.

XEROX® and XEROX FreeFlow®, FreeFlow Output Manager® and FreeFlow Process Manager® are trademarks of Xerox Corporation in the United States and/or other countries.

Adobe Acrobat, Adobe Dreamweaver, Adobe Illustrator, Adobe InDesign, Adobe Photoshop and Adobe After Effects are trademarks of Adobe Systems Incorporated.

SQL Server, Windows Server, Windows, Microsoft Office, Microsoft Excel and Microsoft Access are trademarks or registered trademarks of Microsoft Corporation.

Mac OS is a trademark of Apple Computer, Inc.

ComponentArt is a trademark of ComponentArt Inc.

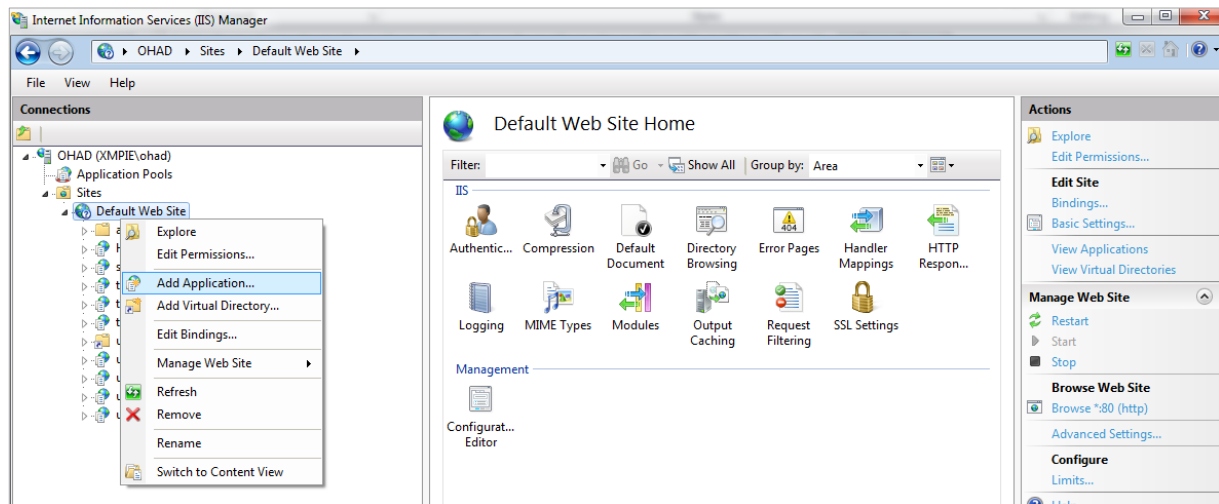
Other trademarks and service marks are the property of their respective owners.

Overview

This document describes the installation procedure of the Tax Webhook sample application.

Installing the sample application

1. Extract the zipped folder (**SampleExternalServiceAPI.zip**) and place it anywhere on your computer.
2. Open **SampleExternalServiceAPI.sln** in Visual Studio and build the solution.
3. Click **Start > Run > type Inetmgr** and click **<Enter>**.
The IIS Manager opens.
4. Expand the root folder and then the **Sites** folder.
5. Right-click **Default Web Site**, and then select **Add Application**.



6. In the **Alias** box, type **SampleExternalServiceAPI**.
7. In the **Path** box, type or browse to the physical directory that contains the Tax Webhook sample.
8. From the **Application Pool** list, choose **ASP.NET V4**
9. Click the **Connect as...** button and fill in the username and password of the operation system.
10. Click **Test Setting** and validate the connectivity.
11. Click **OK** to create the application.

Using the sample application



This sample does not call any external tax service. It just simulates tax calculation.

This API supports several query parameters.

1. **case** – this value is the number of different scenarios which our sample supports.
The default value is 1.
 - 1 – returns the minimal JSON result (only TotalTax).
 - 2 – returns the full JSON result (with Taxes and TaxItems).
 - 3 – returns 400 (BadRequest) HTTP status code.
 - 4 – returns 500 (InternalServerError) HTTP status code.
 - 5 – returns the minimal JSON result (only TotalTax) with timeOutSeconds support.
 - 6 – returns the minimal JSON result (only TotalTax) with incorrect X-Signature header.
 - 7 – returns an empty string.
2. **taxPercentage** – this value is used to calculate tax based on the price.
Let's say the price is \$10. If the taxPercentage is 0.8, then the tax will be \$8.
The default value of taxPercentage is 0.2.
3. **timeOutSeconds** – this value simulates the delay in seconds.
The default value is 0. Supports only case 5.

This is an example of the URL that should be placed in the TaxWebhookConfig (Presets > Global Configurations > TaxWebhookConfig (#85):

<http://localhost/SampleExternalServiceAPI/tax/calculate?case=5&timeOutSeconds=10&taxPercentage=0.8>

View	Edit	Delete	ConfigID	Name	Description	Value
			85			
			85	TaxWebhookConfig	A default configuration for TaxWebhook. To enable TaxWebhook set key "taxWebhookEnabled" to true and configure url.	<pre>{ "taxWebhookEnabled": true, "url": "http://localhost/SampleExternalServiceAPI/tax/calculate?case=5&timeOutSeconds=10&taxPercentage=0.8", "signatureKey": "00000000-0000-0000-0000-000000000000", "storedProcedureName": "Order_DetailsXmlForTax" }</pre>

Notes:

- This sample supports only the signature key "00000000-0000-0000-0000-000000000000".
- For more information please take a look at the **TaxController.cs** and **TaxCalculatorManager.cs** files in the sample.

See also

[Adding a tax webhook in uStore](#)

[uStore's communication with the tax webhook](#)